

## Concrete core activation České Budějovice Research Library



### Uponor'un projedeki rolü

- ✓ Contec ON system 700 m2 incl. underlay for concrete finish, 14x2.0 mm piping and Contec ON module. Main distribution pipelines PE-Xa 40 mm.

## Concrete core activation Česká Budějovice Research Library

Heating and cooling using the Contec ON in The Research Library.

Heating and cooling of the new research library with the Contec ON concrete core activation system

### Proje Bilgileri:

Lokasyon	Tamamlanma durumu
České Budějovice, Czech Republic	2020
Bina Tipi	Ürün sistemleri
Ofis binası	Radyant Isıtma & Soğutma
Proje Tipi	
Yeni bina	

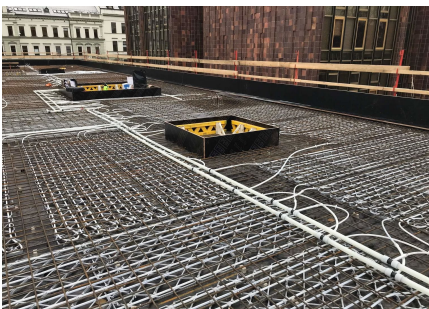
### İş ortakları

- ČIS ČB

## Books require year-round indoor temperature

This building with a total ground area of 1,000 m<sup>2</sup> is equipped with the Contec ON concrete core activation system for year round temperature control of the interior climate within the required limits (between 20 and 26 °C summer/winter). Due to the options on offer, the entire system is fed from one place through ten outlets using PE-Xa 40 mm piping, to which separate modules for activation of the Contec ON system are connected by Tichelmann distributor. It is a one-storey building with a completely glazed façade without any shade whatsoever. With regard to these circumstances, a study was conducted using a 3D model with dynamic simulation of changing temperatures and burdens. The Contec ON system is capable of covering all temperature requirements all year round.

### Concrete core activation České Budějovice Research Library





**+GF+**

Uponor International Sales

Uponor International Sales  
Industriestrasse 56  
97437 Hassfurt  
Germany

Telefon +49 9521 690 0  
Email [international@uponor.com](mailto:international@uponor.com)  
W [www.gfbfs.com](http://www.gfbfs.com)