

Referenze

Luxury High-Rise Benefits from Uponor PEX



Coinvolgimento Uponor



- Uponor AquaPEX® pipe
- ProPEX® fittings and multiport tees
- Uponor PEX-a Pipe Support

A luxury high-rise condo project required an innovative plumbing solution for maximum quality, reliability, and installation efficiency

Because of its alignment with the bustling culture of innovation in nearby New York City, the developer for 99 Hudson in Jersey City, N.J., wanted a plumbing solution that offered long-standing quality and reliability while the installing contractor required a system that offered the most efficient installation possible to maximize profitability. An Uponor AquaPEX® plumbing system with ProPEX® fittings met both needs to provide a durable, reliable, and efficient domestic-water system for the unit risers and in-suite plumbing.

Dati del progetto:

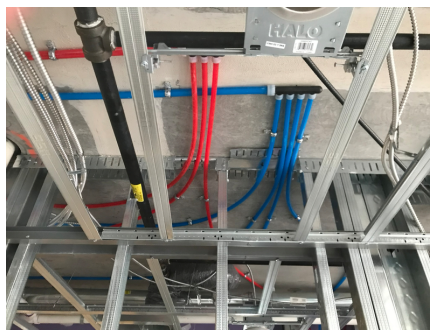
Location	Dimensioni progetto	Anno di completamento
Jersey City, USA	1.4 million square feet	2020
Tipologia di edificio	Numero di piani	
Palazzina residenziale	79 stories, 781 units	
Indirizzo	Sito web	Tipologia progetto
99 Hudson St, Jersey City, NJ 07302	https://99hudsonliving.com/	Nuovo edificio

Results

The flexible, durable Uponor AquaPEX plumbing system was able to provide the installing contractor with a solution that offered maximum productivity and efficiencies to help meet the construction schedule while also ensuring the best results for profitability potential. The ProPEX fitting system eliminated heat, open flame, glues, solvents, chemicals, and fire-watch requirements, providing extra safety for workers as well as additional cost savings compared to using an alternative piping system. To make a ProPEX connection, the installers simply cut the PEX-a pipe, added an expansion ring to the end of the pipe, expanded the pipe and ring with a battery-operated expansion tool, and inserted the fitting. As the pipe and ring contracted back down to their original diameter, it created a solid, strong, reliable connection to the fitting. And because this connection method required the pipe to be expanded first before inserting the fitting, it also eliminated the concern of dry-fit leaks on the jobsite. For the building owner, the Uponor AquaPEX plumbing system eliminated any concern of corrosion or scale buildup, providing peace of mind that the solution would offer residents with decades of consistent, reliable service.

99 Hudson Image Gallery





Awards

Tallest building in Jersey City